

Configure Signavio for Single Sign-On

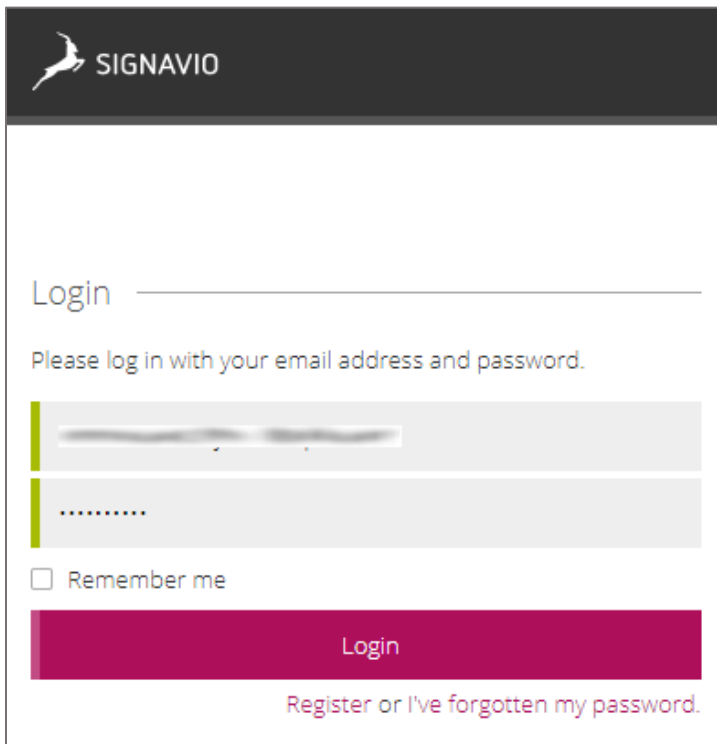
Configuring Signavio for single sign-on (SSO) enables administrators to manage users of Citrix ADC. Users can securely log on to Signavio by using the enterprise credentials.

Prerequisite

Browser Requirements: Internet Explorer 11 and above

To configure Signavio for SSO by using SAML:

1. In a browser, type <https://app-au.signavio.com/p/login> and press **Enter**.
2. Type your Signavio admin account credentials (**Email address** and **Password**) and click **Login**.



SIGNAVIO

Login _____

Please log in with your email address and password.

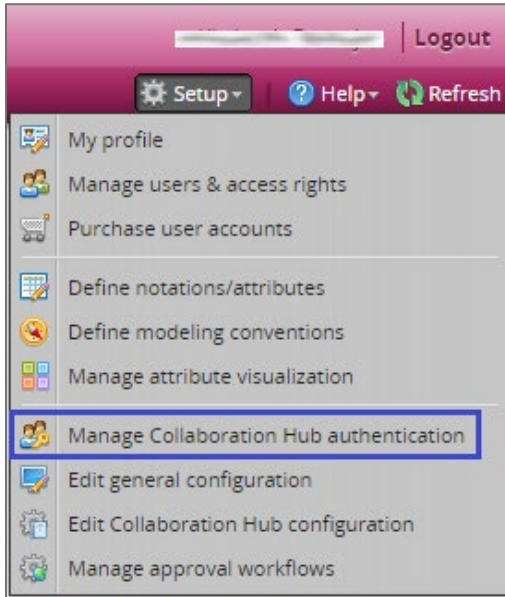
.....

Remember me

Login

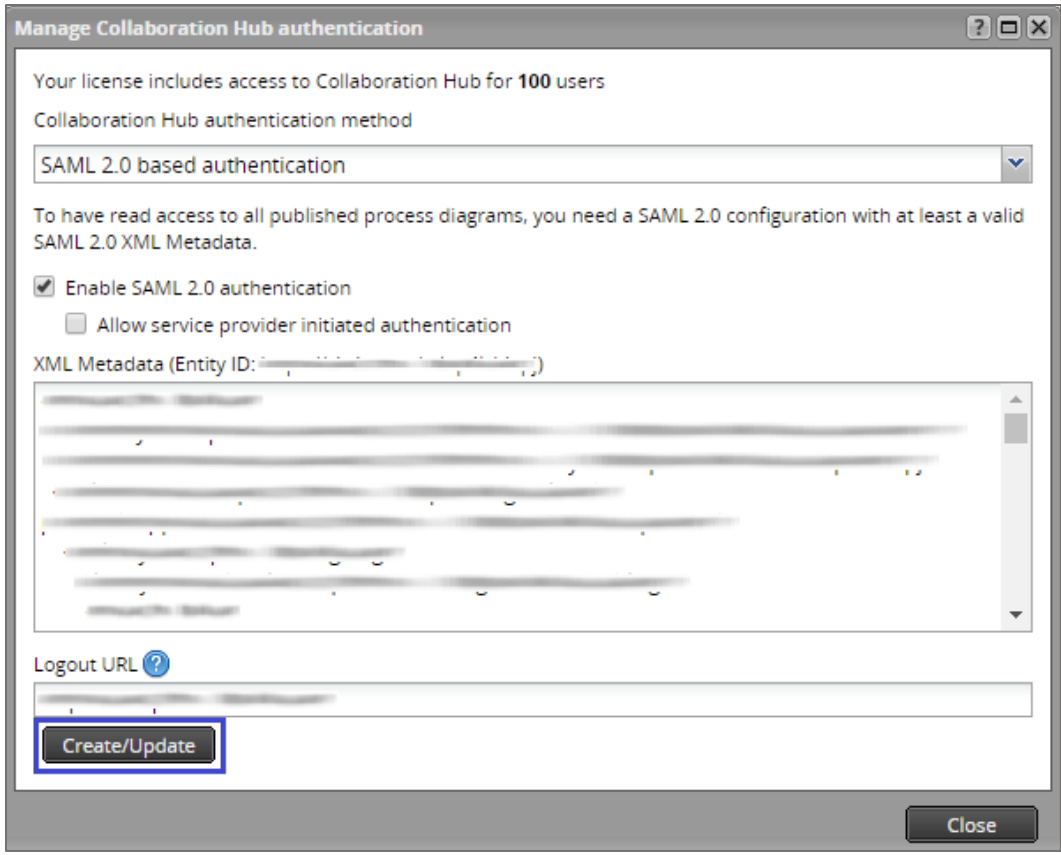
[Register or I've forgotten my password.](#)

- In the top-right corner, click **Setup** and select **Manage Collaboration Hub authentication** from the drop-down list.

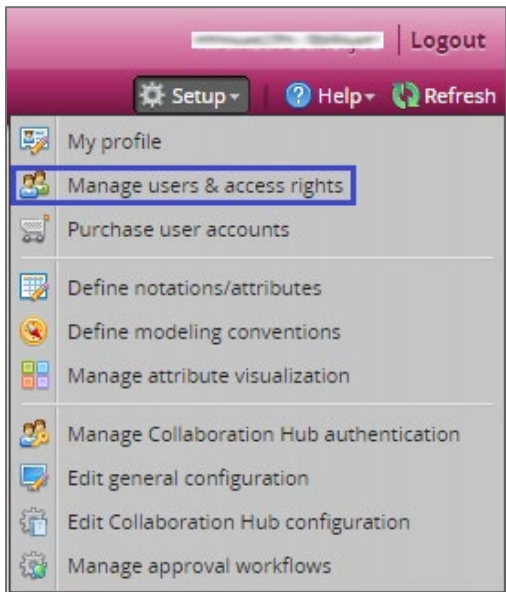


- In the pop-up window, enter the values for the following fields:

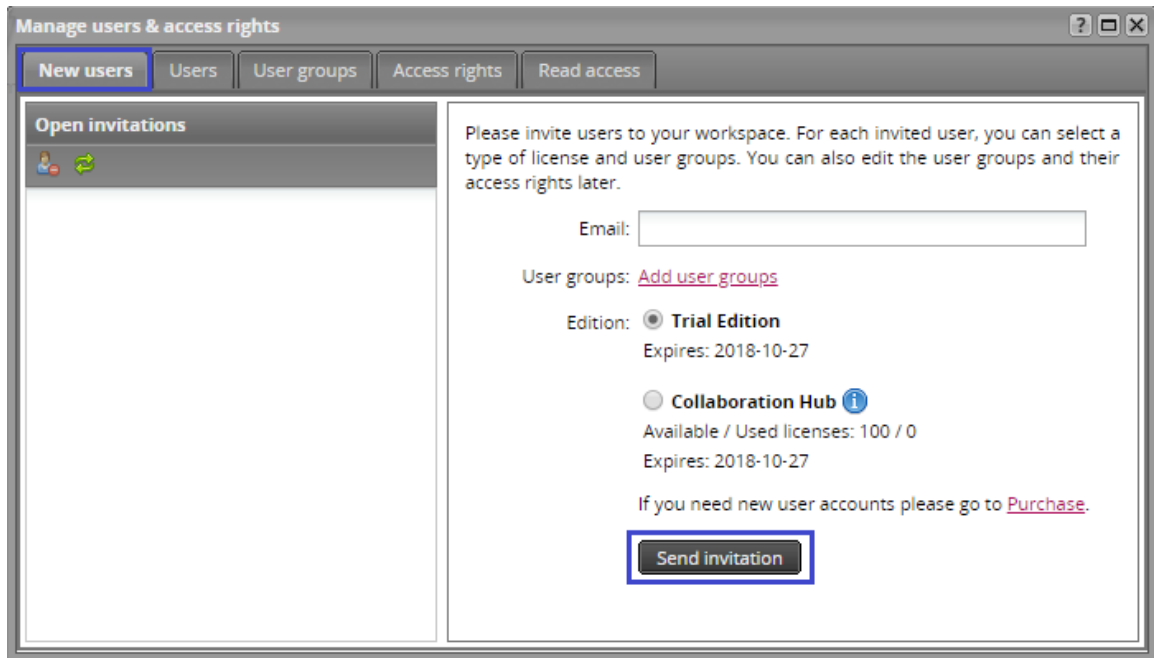
Field Name	Description
Collaboration Hub authentication method	Select SAML 2.0 based authentication from the drop-down list.
Enable SAML 2.0 authentication	Enable the check box.
XML Metadata	Copy and paste the IdP certificate. The IdP certificate must begin and end with -----Begin Certificate----- and -----End Certificate----- Note: The IdP metadata is provided by Citrix and can be accessed from the link below. The link is displayed while configuring SSO settings for your app. <a href="https://gateway.cloud.com/idp/saml/<citrixcloudcust_id>/<app_id>/idp_metadata.xml">https://gateway.cloud.com/idp/saml/<citrixcloudcust_id>/<app_id>/idp_metadata.xml
Logout URL	It is used to redirect modelling users after the logout.



5. Click **Create/Update**.
6. Click **Close**.
7. To add users, click **Setup** and select **Manage users & access rights** from the drop-down list.



- In the pop-up window, click the **New users** tab.



- Enter the user's email address in the **Email** text box and click **Send invitation**.

Note: New users can register by following the verification link sent to the registered email address.